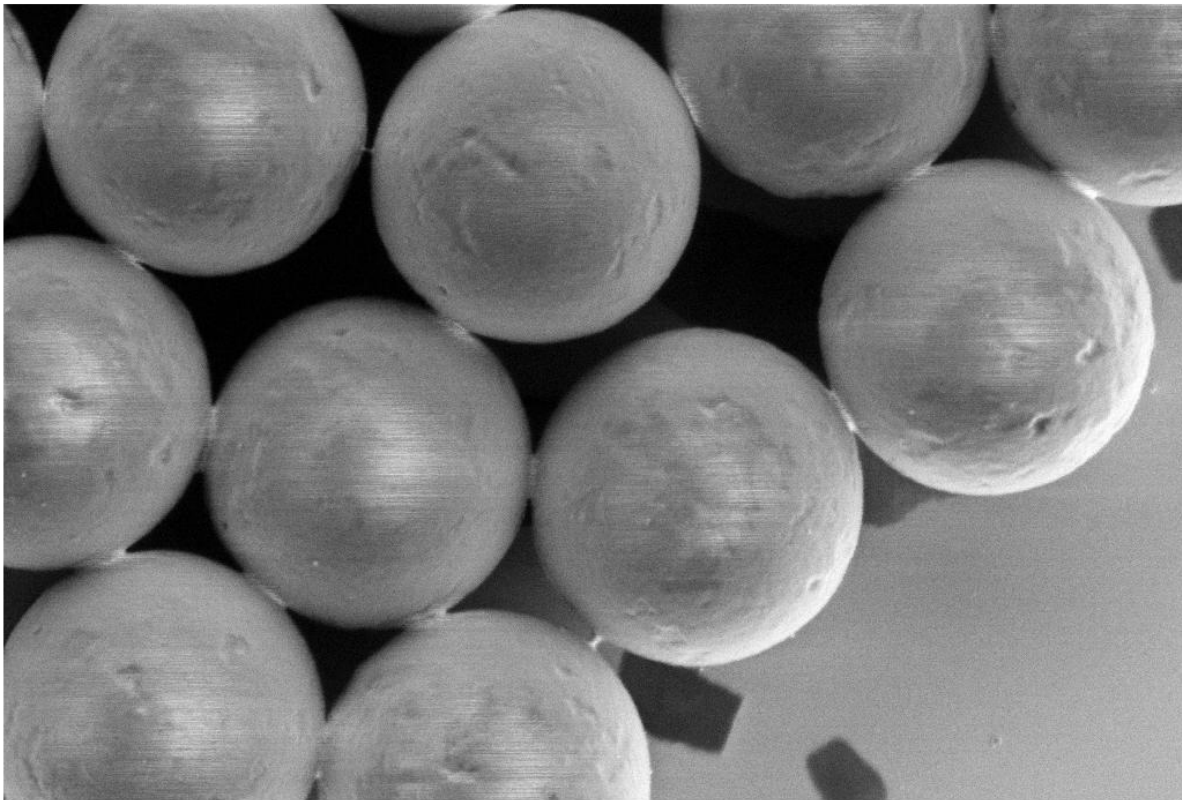
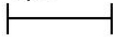


LVSEM applications at the EM Lab



1 μm



EHT = 1.00 kV

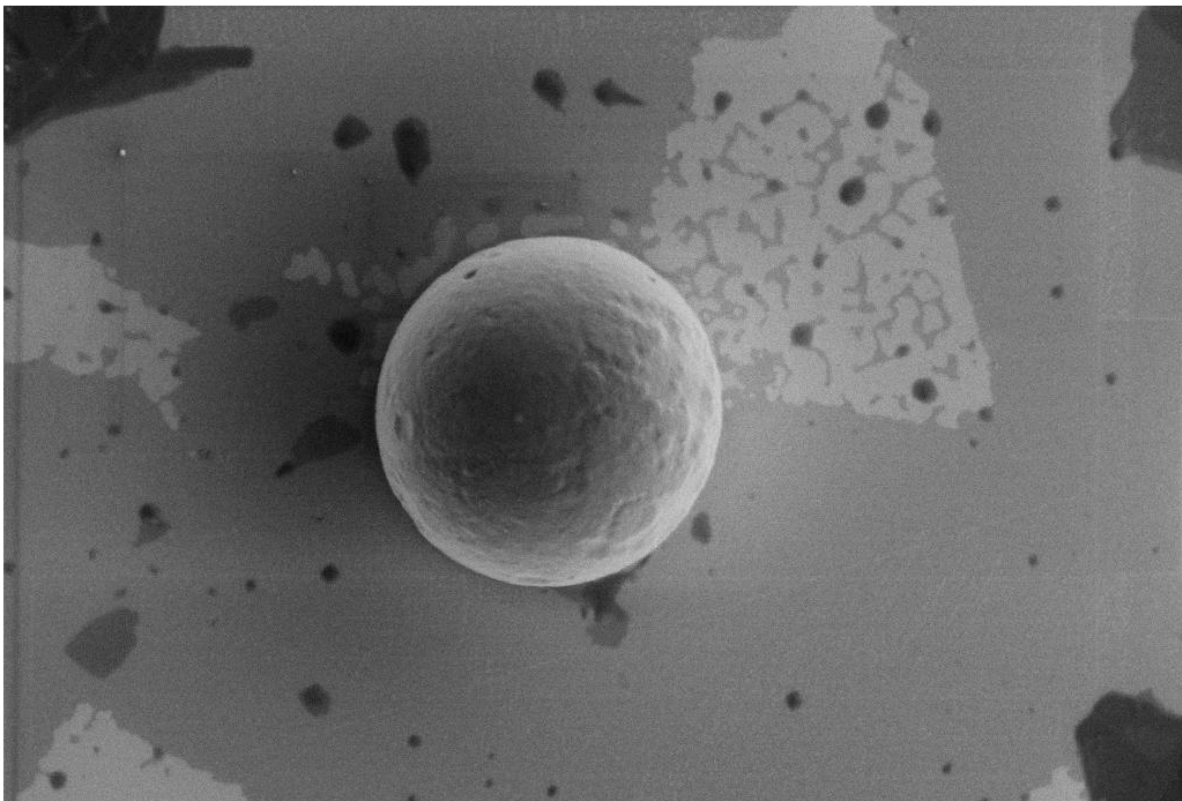
WD = 1 mm

Signal A = InLens

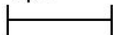
Mag = 10.00 K X

Date :26 Sep 2008

 **NTNU**
Innovation and Creativity



1 μm



EHT = 0.50 kV

WD = 1 mm

Signal A = InLens

Mag = 10.00 K X

Date :3 Oct 2008

 **NTNU**
Innovation and Creativity

* This technique is used everyday for NTNU Nano research!