

the tip situation of a LaB₆ filament during operation....

CHAPTER 2

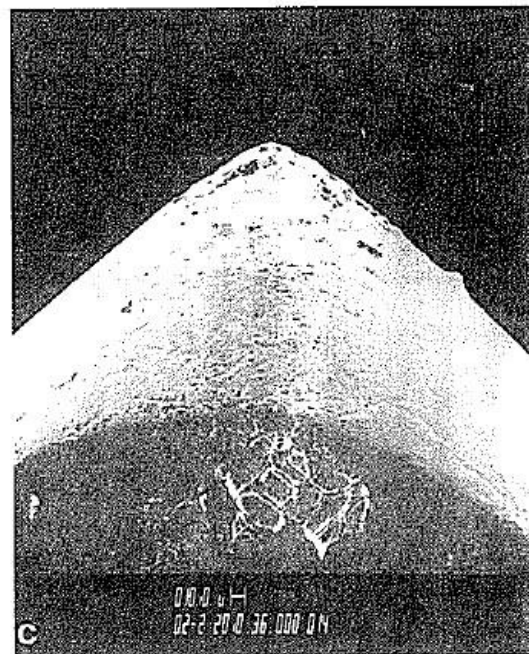
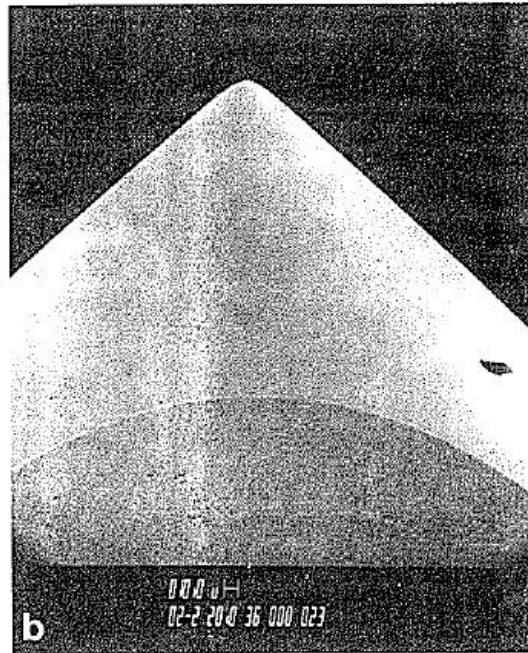
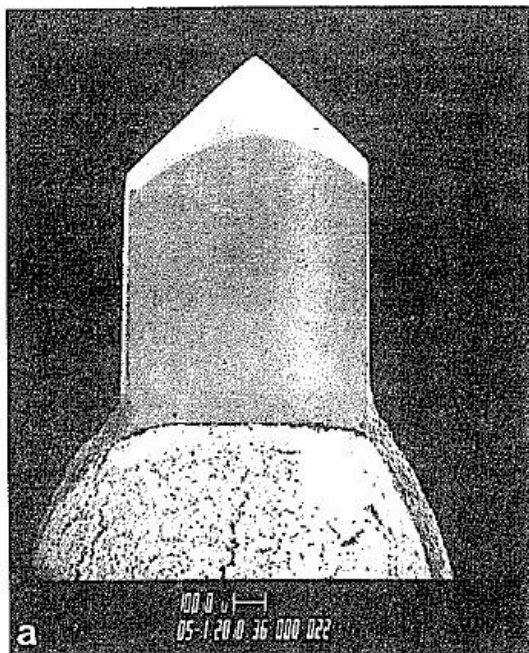


Figure 2.9. SEM micrographs of the lanthanum hexaboride source. (a) LaB₆ block mounted on support. (b) Higher magnification, showing finely ground tip with 10-μm radius. (c) Failed LaB₆ tip with evidence of evaporation and oxide formation.