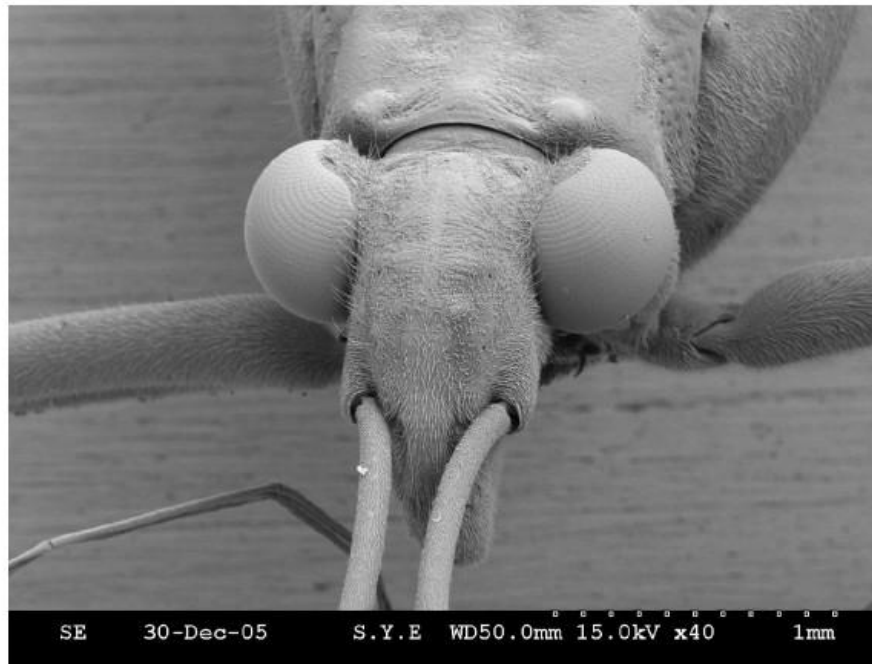


First slide could be as a "bridge" to combine 2 nano-characterization techniques, SEM (topography, from surface), TEM ("projected" image, give more inside information). Their sampling ratios are also quite different...

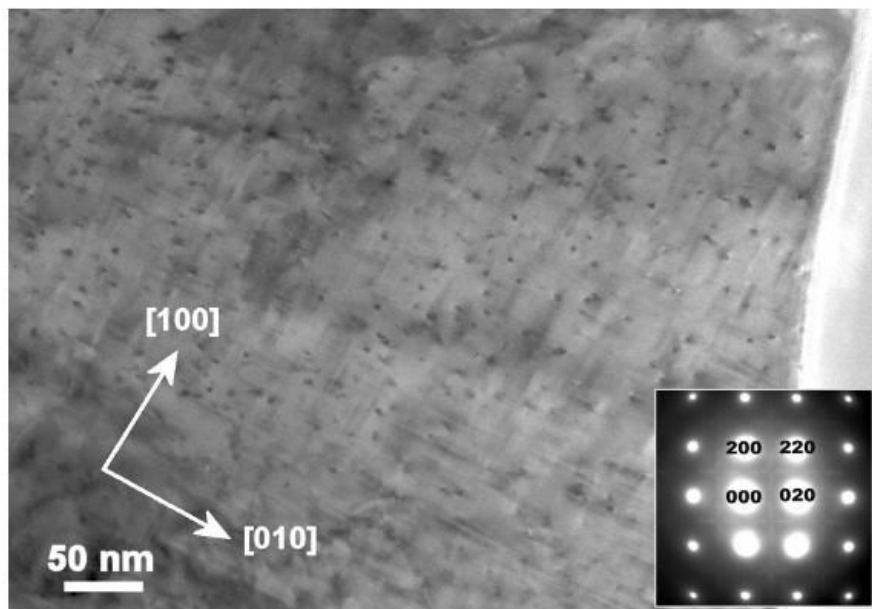
SEM



Bionics is the approach of finding solutions from nature.

"stereo" SEM, benefit from its much larger "depth of field" than that of LM...

TEM



Just like cement needs to be reinforced by steel bars as concrete in building blocks, soft aluminum needs to be hardening by precipitates.